



Daily Self-Parking

Avenida North Parking Garage

Up to One (1) hour	\$14
Up to Two (2) hours	\$22
Up to Three (3) hours	\$30
Daily Max	\$40
(billing cycle begins at 2:00AM)	

Overnight Self-Parking

Avenida North Parking Garage

24 Hours Per Night: \$45.00

(Unlimited In & Out Privileges)

Note: New billing cycle starts every day at 2am

**Any guests who choose to self-park must inform front desk. The guest key card will be enabled at Check-In to access garage.*

Daily Valet Parking

0-2 Hours:	\$35.00
2-4 Hours:	\$42.00
4-6 Hours:	\$45.00
6+ Hours:	\$60.00

Overnight Valet Parking

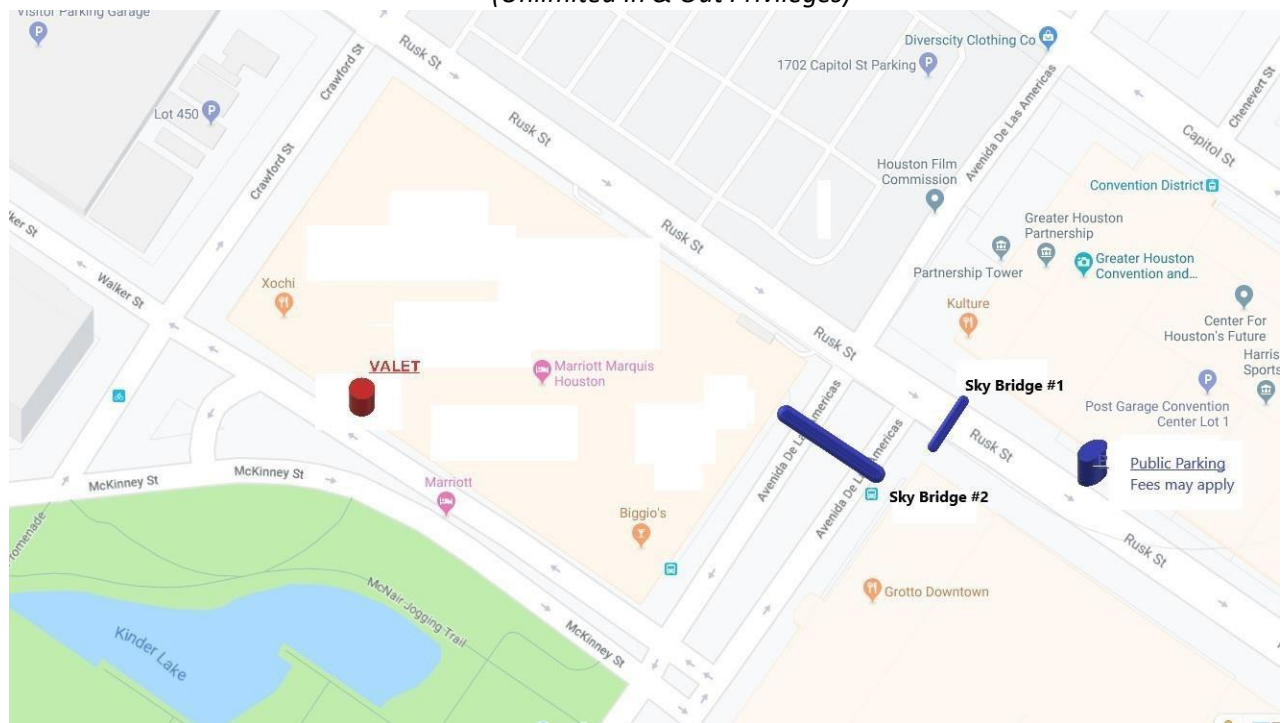
Overnight Valet \$65.00

Overnight Oversized \$75.00

Please Note:

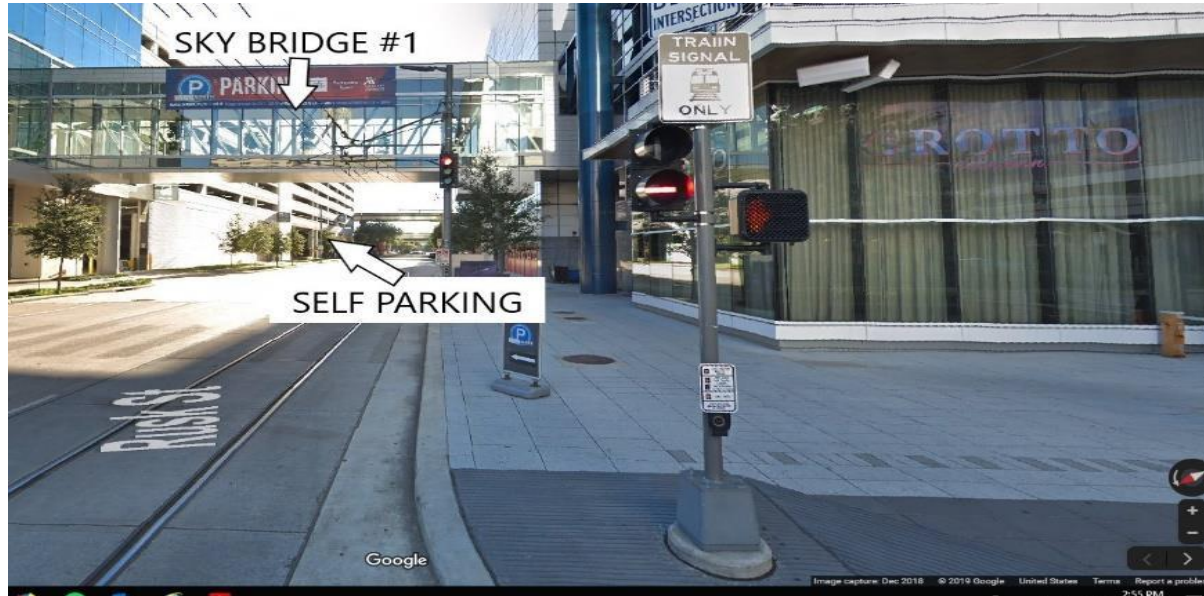
Prices subject to change

(Unlimited In & Out Privileges)

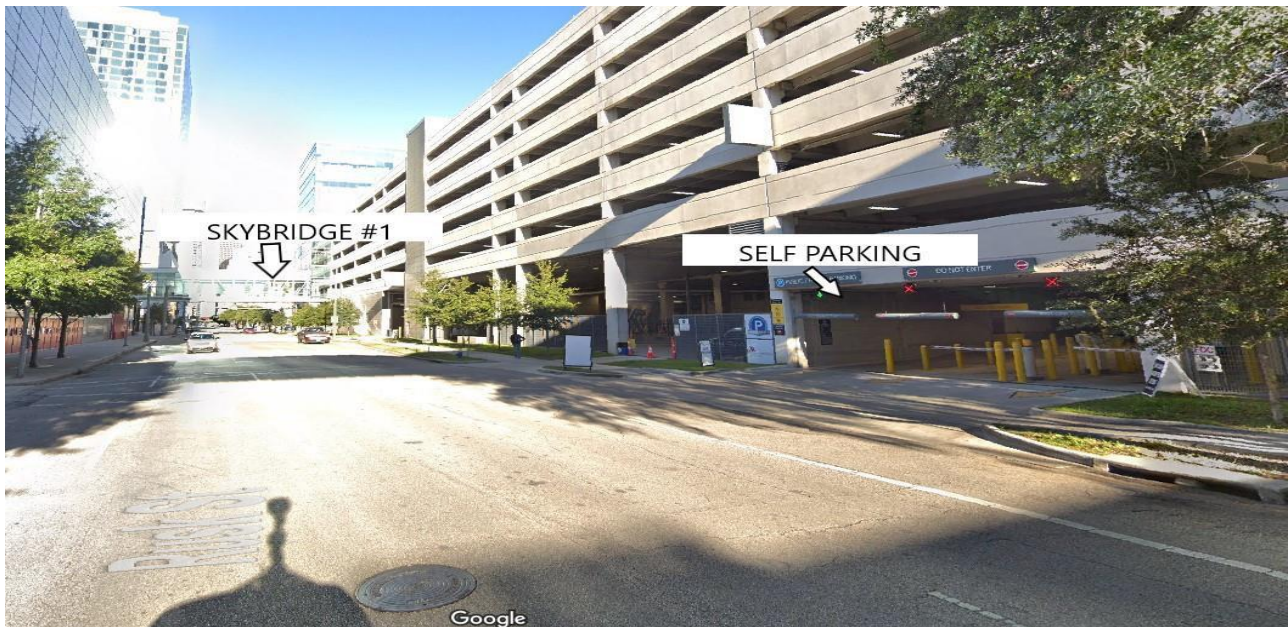


Hotel Self-Parking located in the Avenida North Parking Garage with entrances via Rusk & Capitol Streets.
Access Hotel and Convention Center via Sky Bridge on 2nd Floor.

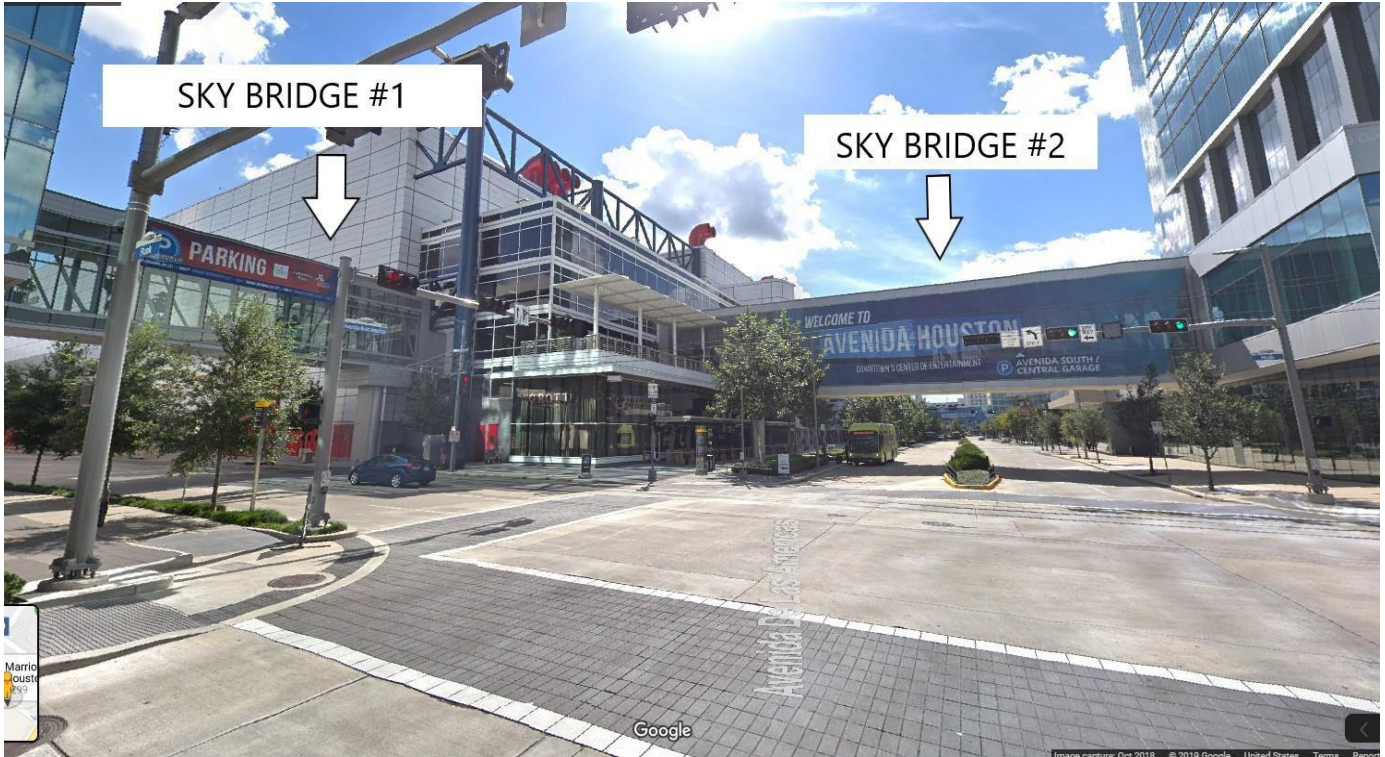
SELF PARKING



- 1) As you go down on Rusk St., towards the 69 FWY, you will pass Sky Bridge #1 (See picture above) and the entrance will be on your left. (Picture Below shows how the entrance looks.)



HOTEL ACCESS



- 1) You may gain access from self-parking through Sky Bridge #1 and 2. (Picture above)
- 2) To gain access to Sky Bridge # 1, you must take the elevator, stairs, or escalator to the second floor.

The picture below, shows you the entrance of Sky Bridge #1 from the elevators and if you were to take the escalator from the 1st floor.

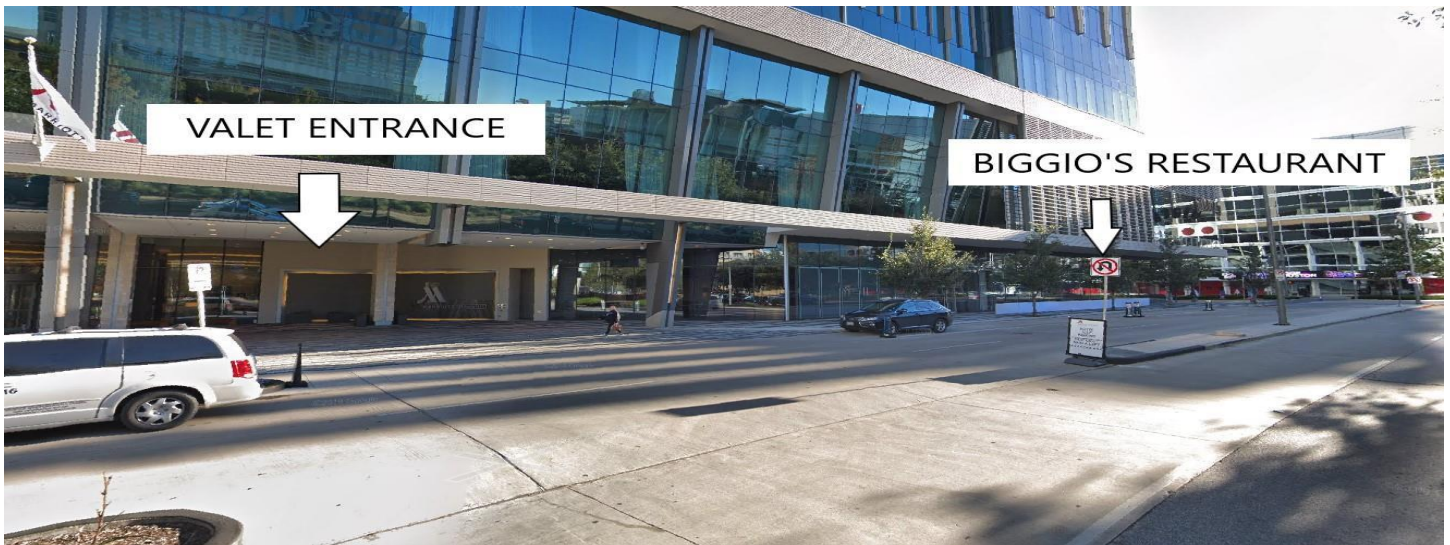




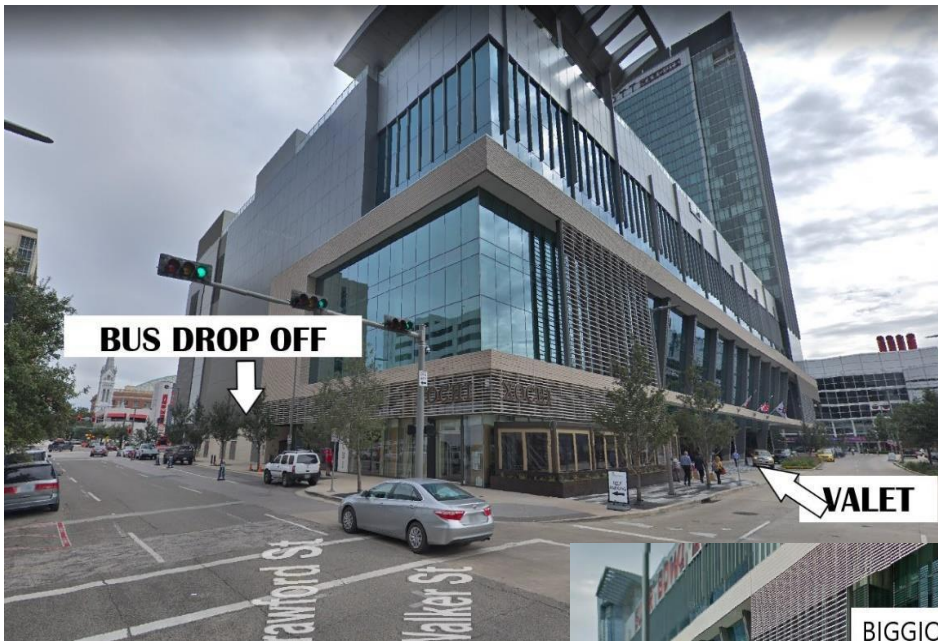
- 3) Once you have crossed Sky Bridge #1 you will have arrived to G.R.B. Convention Center.
- 4) Sky Bridge #2 will be to the right, and if you are facing Sky Bridge #2, on the right hand side you will see the Marriott Marquis logo, as shown in the above picture.
- 5) You will take the bridge and arrive on the 2nd floor of the hotel (Picture Below). Lobby will be on the 1st floor.



VALET



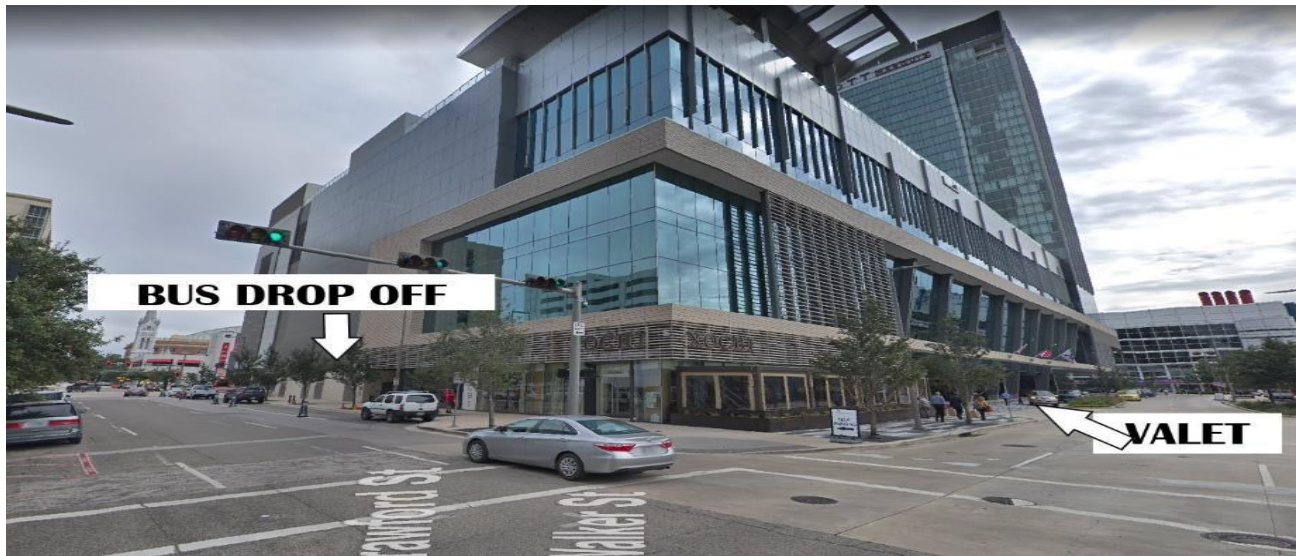
- 1) The Main entrance to the Hotel and valet may be accessed on Walker St. (Making a right), and McKinney St (Making a Left).



BUS DROP OFF



- 1) The bus drop off is located on Crawford St., before Rusk St. The picture above shows you Crawford St. and Walker St.



- 2) The picture above shows location if you were on Crawford St. passing Walker St.